



WATER QUALITY REPORT

2025 | *CITY OF CADDO MILLS*

PUBLIC WATER SYSTEM ID: TX1160001

CITY OF CADDO MILLS
Public Water System ID: TX1160001

We are pleased to present you with the Annual Water Quality Report (Consumer Confidence Report) for the year January 1 - December 31, 2025. This report is intended to provide you with important information about your drinking water and the efforts that we make to continue to provide you with safe drinking water.

Este reporte incluye información importante sobre el agua para tomar. Para asistencia en español, favor de llamar al teléfono (903) 527-3116.

Sources of Drinking Water

The City of Caddo Mills is purchased surface water.

Our water sources and source water assessment information are listed below:

Source Name	Type of Water	Report Status	Location
SW from Cash SUD I/C with TX1160018	Surface Water	Active	Near I-30
SW from City of Greenville I/C with TX1160004	Surface Water	Active	2807 Highway 66

The sources of drinking water (both tap water and bottled water) include rivers, lakes, streams, ponds, reservoirs, springs, and wells. As water travels over the surface of land or through the ground, it dissolves naturally-occurring minerals and, in some cases, radioactive material, and can pick up substances resulting from the presence of animals or from human activity.

Drinking water, including bottled water, may reasonably be expected to contain at least small amounts of some contaminants. The presence of contaminants does not necessarily indicate that water poses a health risk. More information about contaminants and potential health effects can be obtained by calling the EPA's Safe Drinking Water Hotline at (800) 426-4791.

For more information regarding this report, contact:

Paul Miller

City of Caddo Mills

Public Works Director (903) 527-3116



Public Participation Opportunity

The Caddo Mills City Council meets the 2nd Tuesday of every month at 6:00 p.m. Meetings are held at City Hall, 2313 Main Street.

The sources of drinking water (both tap water and bottled water) include rivers, lakes, streams, ponds, reservoirs, springs, and wells. As water travels over the surface of land or through the ground, it dissolves naturally-occurring minerals and, in some cases, radioactive material, and can pick up substances resulting from the presence of animals or from human activity.

Drinking water, including bottled water, may reasonably be expected to contain at least small amounts of some contaminants. The presence of contaminants does not necessarily indicate that water poses a health risk. More information about contaminants and potential health effects can be obtained by calling the EPA's Safe Drinking Water Hotline at (800) 426-4791. Contaminants that may be present in source water include:

Microbial Contaminants - such as viruses and bacteria, which may come from sewage treatment plants, septic systems, agricultural livestock operations, and wildlife.

Inorganic Contaminants - such as salts and metals, which can be naturally occurring or result from urban stormwater runoff, industrial, or domestic wastewater discharges, oil and gas productions, mining, or farming.

Pesticides and Herbicides - which may come from a variety of sources such as agriculture, urban stormwater runoff, and residential uses.

Organic Chemical Contaminants - including synthetic and volatile organic chemical, which are by-products of industrial processes and petroleum production, and can also come from gas stations, urban stormwater runoff, and septic systems.

Radioactive Contaminants - which can be naturally occurring or be the result of oil and gas production and mining activities.

A service line inventory has been prepared and can be accessed - yes.

DEFINITIONS

In the tables on the following pages, you will find many terms and abbreviations that you may not be familiar with. To help you better understand these terms, we have provided the definitions below.

Action Level (AL): The concentration of a contaminant which, if exceeded, triggers treatment or other requirements which a water system must follow.

Action Level Goal (ALG): The level of a contaminant in drinking water below which there is no known or expected risk to health. ALGs allow for a margin of safety.

Level 1 Assessment: A Level 1 Assessment is a study of the water system to identify potential problems and determine (if possible) why total coliform bacteria have been found in our water system.

Level 2 Assessment: A Level 2 Assessment is a very detailed study of the water system to identify potential problems and determine (if possible) why an E. coli MCL violation has occurred and/or why total coliform bacteria have been found in our water system on multiple occasions.

Maximum Contaminant Level or MCL: The highest level of a contaminant that is allowed in drinking water. MCLs are set as close to the MCLGs as feasible using the best available treatment technology.

Maximum Contaminant Level Goal or MCLG: The level of a contaminant in drinking water below which there is no known or expected risk to health. MCLGs allow for a margin of safety.

Maximum residual disinfectant level goal or MRDLG: The level of a contaminant in drinking water disinfectant below which there is no known or expected risk to health. MRDLGs do not reflect the benefits of the use of disinfectants to control microbial contaminants.

Maximum residual disinfectant level or MRDL: The highest level of a disinfectant allowed in drinking water. There is convincing evidence that addition of a disinfectant is necessary for control of microbial contaminants.

Treatment Technique or TT: A required process intended to reduce the level of a contaminant in drinking water.

Variations and Exemptions: State or EPA permission not to meet an MCL or a treatment technique under certain conditions.

Avg: Average - Regulatory compliance with some MCLs are based on running annual average of monthly samples.

RAA: Running Annual Average.

LRAA: Locational Running Annual Average.

mrem: millirems per year (a measure of radiation absorbed by the body.)

ppb: micrograms per liter (ug/L) or parts per billion - or one ounce in 7,350,000 gallons of water.

ppm: milligrams per liter (mg/L) or parts per million - or one ounce in 7,300 gallons of water.

picocuries per liter (pCi/L): picocuries per liter is a measure of the radioactivity in water.

na: not applicable.

DISINFECTANT RESIDUAL

All public water systems in Texas are required to disinfect drinking water to ensure control of microbial contaminants. Disinfectants are water additives used to control microbes.

Disinfectant	Year	Average Level	Unit	Range	MRDL/MRDLG Goal
Chlorine (Chloramines Total)	2025	2.87	ppm	1.96 - 3.55	4/4

REGULATED CONTAMINANTS

In the tables below, we have shown the regulated contaminants that were detected. Chemical Sampling of our drinking water may not be required on an annual basis; therefore, information provided in this table refers back to the latest year of chemical sampling results.

Microbiological	Result	MCL	MCLG	Typical Source
COLIFORM (TCR)	In the month of September, 1 sample (s) returned as positive	Treatment Technique Trigger	0	Naturally present in the environment

Lead and Copper	Period	90th Percentile: 90% of your water utility levels were less than	Range of Sampled Results (low - high)	Unit	AL	Sites over AL	Typical Source
Copper, Free	2022 - 2024	0.207	0.0511 - 0.49	ppm	1.3	0	Corrosion of household plumbing system; Erosion of natural deposits; Leaching from wood preservatives
Lead	2022 - 2024	1.49	0 - 2.98	ppb	15	0	Corrosion of household plumbing systems; Erosion of natural deposits

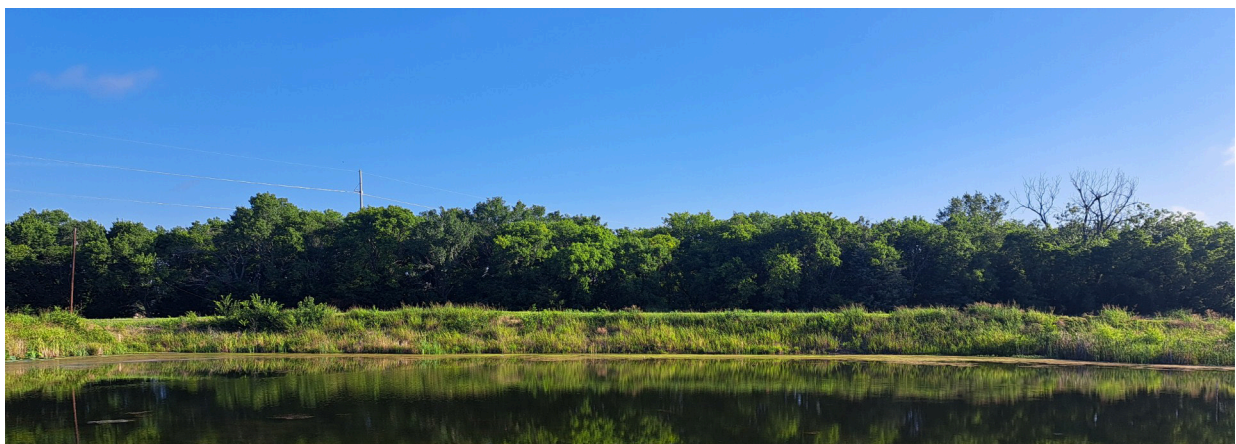
Disinfection Byproducts	Sample Point	Period	Highest LRAA	Range	Unit	MCL	MCLG	Typical Source
Total Haloacetic Acids (HAAS)	2902 North Rock	2025	44	39.2	ppb	60	0	By-product of drinking water disinfection
TTHM	3004 North Rock	2025	33	28.6	ppb	80	0	By-product of drinking water chlorination

Regulated Contaminants	Collection Date	Highest Value	Range	Unit	MCL	MCLG	Typical Source
Nitrate	1/6/2025	0.218	0.218	ppm	10	10	Runoff from fertilizer use; Leaching from septic tanks, sewage; Erosion of natural deposits
Nitrate - Nitrite	2/1/2021	0.103	0.103	ppm	10	10	Runoff from fertilizer use; Leaching from septic tanks, sewage; Erosion of natural deposits

VIOLATIONS

During the period covered by this report we have the following noted violations.

Violation Period	Analyte	Violation Type	Violation Explanation
12/30/2024 - 4/1/2025	Lead & Copper Rule	Lead Consumer Notice	Failed to meet content, delivery, and/or reporting requirements for lead consumer notification
12/1/2025 - 12/31/2025	Revised Total Coliform Rule (RTCR)	Monitoring, Routine, Minor (RTCR)	Failed to collect all routine or replacement coliform samples



JUST SO YOU KNOW...

In order to ensure that tap water is safe to drink, the EPA prescribes regulations which limit the amount of certain contaminants in water provided by public water systems. FDA regulations establish limits for contaminants in bottled water which must provide the same protection for public health.

Some people may be more vulnerable to contaminants in drinking water than the general population. Contaminants may be found in drinking water that may cause taste, color, or odor problems. These types of problems are not necessarily causes for health concerns. For more information on taste, odor, or color of drinking water, please contact the City.

Immuno-compromised persons such as persons with cancer undergoing chemotherapy, persons who have undergone organ transplants, people with HIV/AIDS and other immune system disorders, some elderly and infants can be particularly at risk from infections. These people should seek advice about drinking water from their health care providers. EPA/CDC guidelines on appropriate means to lessen the risk of infection by *Cryptosporidium* and other microbial contaminants are available from the Safe Drinking Water Hotline 800-426-4791.

Lead can cause serious health effects in people of all ages, especially pregnant women, infants (both formula and breast fed), and young children. The City of Caddo Mills is responsible for providing high quality drinking water and removing lead pipes, but cannot control the variety of materials used in the plumbing in your home. Because lead levels may vary over time, lead exposure is possible even when your tap sampling results do not detect lead at one point in time. You can help protect yourself and your family by identifying and removing lead materials within your home plumbing and taking steps to reduce your family's risk. Using a filter, certified by an American National Standards Institute accredited certifier to reduce lead, is effective in reducing lead exposures. Follow the instructions provided with the filter to ensure the filter is used properly. Use only cold water for drinking, cooking, and making baby formula. Boiling water does not remove lead from water. Before using tap water for drinking, cooking or making baby formula, flush your pipes for several minutes. You can do this by running your tap, taking a shower, doing laundry or a load of dishes. If you have a lead service line or galvanized requiring replacement service line, you may need to flush your pipes for a longer period. If you are concerned about lead in your water and wish to have your water tested, contact the City of Caddo Mills at 903-527-3116. Information on lead in drinking water, testing methods, and steps that you can take to minimize exposure is available at: <https://www.epa.gov/safewater/lead>.

