

**NOTICE OF PUBLIC HEARING ON ANNEXATION OF TXDOT RIGHT-OF-WAY  
CORRIDORS PURSUANT TO CHAPTER 43, TEXAS LOCAL GOVERNMENT CODE**

**NOTICE IS HEREBY GIVEN TO ALL INTERESTED PERSONS, THAT:**

The City Council of the City of Caddo Mills, Texas, will hold a public hearing, on **June 9, 2026, at 6:00 p.m.** at **Caddo Mills City Hall**, located at **2313 Main Street, Caddo Mills, Texas 75135**, giving all interested persons the right to appear and be heard on the following proposed annexation of certain Texas Department of Transportation (TxDOT) right-of-way along Interstate 30 by the City of Caddo Mills, Texas.

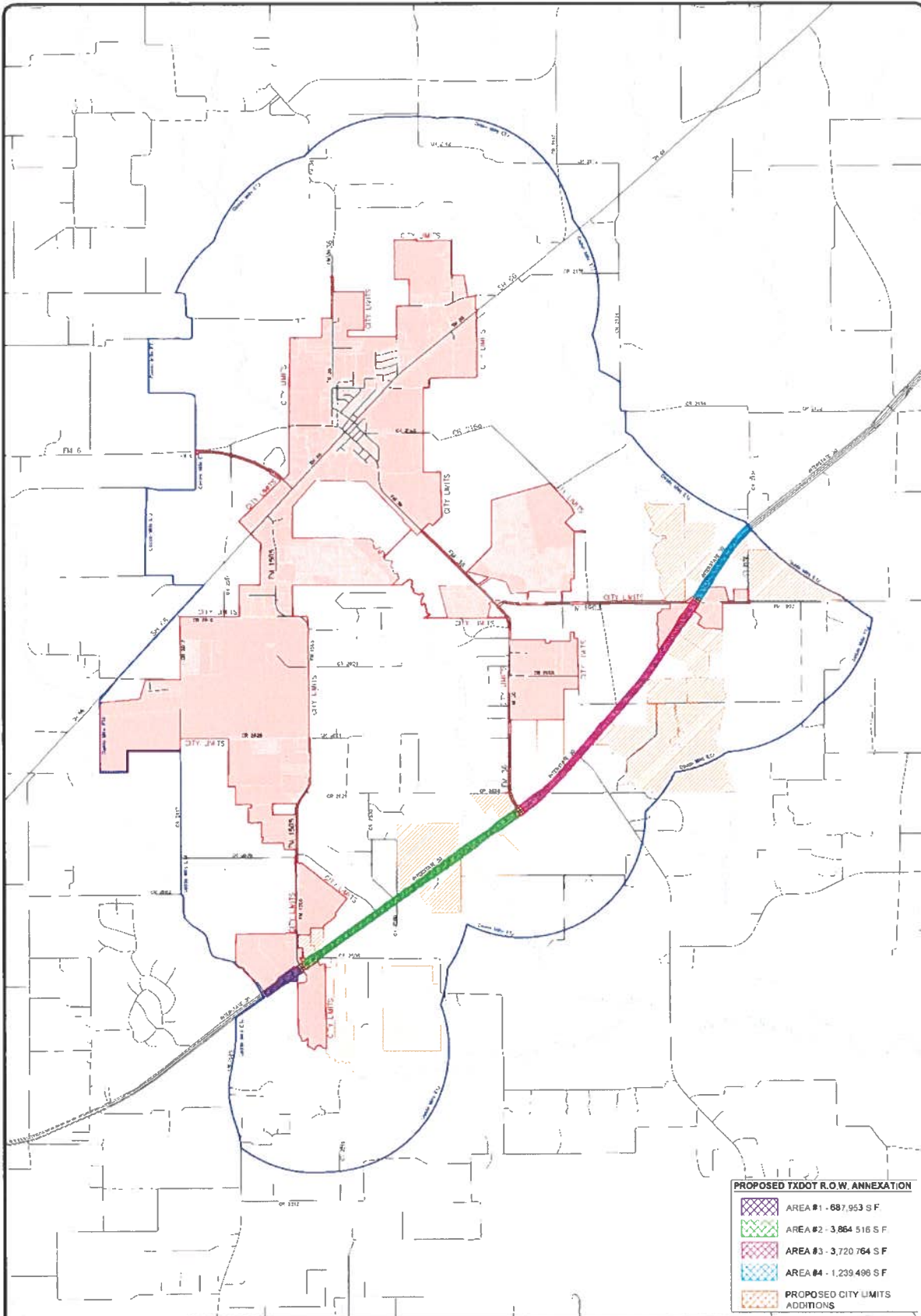
The legal description and map of the proposed annexation area are on file with the City Secretary of the City of Caddo Mills, Texas, and are available for public inspection during regular business hours.

The City of Caddo Mills, Texas, proposes to institute annexation proceedings to enlarge and extend the boundary limits of said city to include the following territories, to wit:

**Texas Department of Transportation right-of-way along Interstate 30 extending in segments from Brushy Creek to FM 1565, FM 1565 to FM 36, FM 36 to FM 1903, and FM 1903 to County Road 2172.**

For more information, contact Becky Pattillo, City Secretary, at 903-527-9401, or [secretary@cityofcaddomills.com](mailto:secretary@cityofcaddomills.com).

# AREA PROPOSED TO BE ANNEXED BY THE CITY OF CADDO MILLS



Sheet 1 of 1

SYSTEM MAP  
FOR  
CITY OF CADDO MILLS  
HUNT COUNTY, TEXAS

PROPOSED TXDOT R.O.W. ANNEXATION

NO	DESCRIPTION	DATE	BY	REVISION	DATE
1	PROPOSED R.O.W. ANNEXATION	10/20/20	JL		
2	PROPOSED CITY LIMITS ADDITIONS	10/20/20	JL		
3	PROPOSED R.O.W. ANNEXATION	10/20/20	JL		
4	PROPOSED CITY LIMITS ADDITIONS	10/20/20	JL		

12000 W. 23rd - Houston, Texas 77058  
832.927.0000  
DUNAWAY.COM

**City of Caddo Mills, State of Texas, County of Hunt  
City Limits Annexation  
Of  
Interstate 30 Right of Way  
From  
Brushy Creek to FM 1565**

BEGINNING at the intersection of the existing city limits boundary and the southwest corner of a tract of land in Hunt County, Texas, out of the Shelby County School Land survey, A0946, Tract 54-12, and being a 61.13 acre tract of land (part of 86.968 ac) described in a deed from BSP Land Advisors LLC to Caddo Prime LLC dated November 15, 2024 and recorded in Volume 2024, Page 22238 of the Deed Records of Hunt County Texas and being more fully described as follows:

THENCE North 55°05'41" East, along a line, a distance of 711.76 feet to a point for a corner;  
THENCE North 32°45'02" East, along a line, a distance of 206.24 feet to a point for a corner;  
THENCE North 54°04'43" East, along a line, a distance of 820.02 feet to a point for a corner;  
THENCE South 31°51'23" East, along a line, a distance of 52.12 feet to a point for a corner;  
THENCE North 55°33'40" East, along a line, a distance of 108.96 feet to a point for a corner;  
THENCE South 39°42'13" East, along a line, a distance of 362.29 feet to a point for a corner;  
THENCE South 57°29'56" West, along a line, a distance of 255.26 feet to a point for a corner;  
THENCE South 0°34'42" East, along a line, a distance of 234.54 feet to a point for a corner;  
THENCE South 88°05'11" West, along a line, a distance of 336.03 feet to a point for a corner;  
THENCE South 54°14'55" West, along a line, a distance of 52.76 feet to a point for a corner;  
THENCE South 10°37'37" East, along a line, a distance of 16.45 feet to a point for a corner;  
THENCE South 63°32'57" West, along a line, a distance of 142.13 feet to a point for a corner;  
THENCE North 76°30'47" West, along a line, a distance of 20.33 feet to a point for a corner;  
THENCE South 62°29'31" West, along a line, a distance of 50.97 feet to a point for a corner;  
THENCE South 54°37'28" West, along a line, a distance of 923.17 feet to a point for a corner;  
THENCE North 35°22'32" West, along a line, a distance of 301.72 feet; to the point of beginning and containing 687,952.57 square feet, or 15.79 acres of land.

**City of Caddo Mills, State of Texas, County of Hunt**  
**City Limits Annexation**  
**Of**  
**Interstate 30 Right of Way**  
**From**  
**FM 1565 to FM 36**

BEGINNING at the intersection of the existing city limits boundary and the southwest corner of a tract of land in Hunt County, Texas, out of the Bustilla Clemente survey, A0049, Tract 91, and being a 1.946 acre tract of land described in a deed from Griffis Vaughan Green to EH Green dated March 26, 1973 and recorded in Volume 726, Page 881 of the Deed Records of Hunt County Texas and being more fully described as follows:

THENCE South 89°06'11" East, along a line, a distance of 165.61 feet to a point for a corner;  
THENCE North 54°29'06" East, along a line, a distance of 221.70 feet to a point for a corner;  
THENCE North 54°27'49" East, along a line, a distance of 55.90 feet to a point for a corner;  
THENCE North 64°19'40" East, along a line, a distance of 140.35 feet to a point for a corner;  
THENCE North 54°13'00" East, along a line, a distance of 88.05 feet to a point for a corner;  
THENCE North 65°02'14" East, along a line, a distance of 203.59 feet to a point for a corner;  
THENCE North 53°07'48" East, along a line, a distance of 156.51 feet to a point for a corner;  
THENCE North 54°57'20" East, along a line, a distance of 355.57 feet to a point for a corner;  
THENCE North 54°58'08" East, along a line, a distance of 262.23 feet to a point for a corner;  
THENCE North 54°10'45" East, along a line, a distance of 35.27 feet to a point for a corner;  
THENCE North 54°10'45" East, along a line, a distance of 233.98 feet to a point for a corner;  
THENCE North 54°10'45" East, along a line, a distance of 227.79 feet to a point for a corner;  
THENCE North 54°10'45" East, along a line, a distance of 181.69 feet to a point for a corner;  
THENCE North 51°58'16" East, along a line, a distance of 34.87 feet to a point for a corner;  
THENCE North 55°31'56" East, along a line, a distance of 227.72 feet to a point for a corner;  
THENCE North 54°26'02" East, along a line, a distance of 787.21 feet to a point for a corner;  
THENCE North 54°26'01" East, along a line, a distance of 31.91 feet to a point for a corner;  
THENCE North 55°19'18" East, along a line, a distance of 296.71 feet to a point for a corner;  
THENCE North 54°25'24" East, along a line, a distance of 60.00 feet to a point for a corner;  
THENCE North 54°25'23" East, along a line, a distance of 402.17 feet to a point for a corner;  
THENCE North 32°10'46" East, along a line, a distance of 49.13 feet to a point for a corner;  
THENCE North 53°47'30" East, along a line, a distance of 92.41 feet to a point for a corner;  
THENCE North 54°30'27" East, along a line, a distance of 79.13 feet to a point for a corner;  
THENCE North 77°19'43" East, along a line, a distance of 50.10 feet to a point for a corner;  
THENCE North 54°25'23" East, along a line, a distance of 231.20 feet to a point for a corner;  
THENCE North 54°25'24" East, along a line, a distance of 61.34 feet to a point for a corner;  
THENCE North 54°25'23" East, along a line, a distance of 81.89 feet to a point for a corner;  
THENCE North 52°27'39" East, along a line, a distance of 186.15 feet to a point for a corner;  
THENCE North 54°46'57" East, along a line, a distance of 200.70 feet to a point for a corner;  
THENCE North 42°22'10" East, along a line, a distance of 82.34 feet to a point for a corner;  
THENCE North 54°31'01" East, along a line, a distance of 51.57 feet to a point for a corner;  
THENCE North 63°14'33" East, along a line, a distance of 121.92 feet to a point for a corner;  
THENCE North 54°47'00" East, along a line, a distance of 77.63 feet to a point for a corner;  
THENCE North 54°52'03" East, along a line, a distance of 931.86 feet to a point for a corner;  
THENCE North 45°44'39" East, along a line, a distance of 205.81 feet to a point for a corner;  
THENCE North 54°20'18" East, along a line, a distance of 1,218.87 feet to a point for a corner;  
THENCE North 52°14'16" East, along a line, a distance of 339.47 feet to a point for a corner;  
THENCE North 55°00'54" East, along a line, a distance of 656.07 feet to a point for a corner;  
THENCE North 63°35'18" East, along a line, a distance of 72.05 feet to a point for a corner;  
THENCE North 58°08'56" East, along a line, a distance of 245.78 feet to a point for a corner;  
THENCE North 52°05'09" East, along a line, a distance of 80.69 feet to a point for a corner;  
THENCE North 55°30'35" East, along a line, a distance of 173.73 feet to a point for a corner;

THENCE South 33°10'43" East, along a line, a distance of 13.30 feet to a point for a corner;  
THENCE North 56°07'37" East, along a line, a distance of 155.42 feet to a point for a corner;  
THENCE North 56°06'23" East, along a line, a distance of 207.24 feet to a point for a corner;  
THENCE North 48°29'04" East, along a line, a distance of 79.91 feet to a point for a corner;  
THENCE North 47°23'03" East, along a line, a distance of 147.91 feet to a point for a corner;  
THENCE North 45°00'00" East, along a line, a distance of 150.47 feet to a point for a corner;  
THENCE North 54°06'56" East, along a line, a distance of 256.57 feet to a point for a corner;  
THENCE North 54°35'02" East, along a line, a distance of 631.28 feet to a point for a corner;  
THENCE North 54°52'01" East, along a line, a distance of 141.77 feet to a point for a corner;  
THENCE South 34°42'38" East, along a line, a distance of 387.23 feet to a point for a corner;  
THENCE South 54°40'21" West, along a line, a distance of 333.63 feet to a point for a corner;  
THENCE South 55°09'40" West, along a line, a distance of 229.07 feet to a point for a corner;  
THENCE South 54°03'50" West, along a line, a distance of 249.77 feet to a point for a corner;  
THENCE South 54°25'19" West, along a line, a distance of 271.14 feet to a point for a corner;  
THENCE South 62°46'01" West, along a line, a distance of 28.74 feet to a point for a corner;  
THENCE South 62°46'00" West, along a line, a distance of 114.23 feet to a point for a corner;  
THENCE South 62°46'00" West, along a line, a distance of 110.17 feet to a point for a corner;  
THENCE South 54°03'50" West, along a line, a distance of 700.00 feet to a point for a corner;  
THENCE South 45°31'59" West, along a line, a distance of 202.24 feet to a point for a corner;  
THENCE South 54°03'50" West, along a line, a distance of 911.60 feet to a point for a corner;  
THENCE South 54°47'05" West, along a line, a distance of 1,389.73 feet to a point for a corner;  
THENCE South 63°18'56" West, along a line, a distance of 202.24 feet to a point for a corner;  
THENCE South 54°47'05" West, along a line, a distance of 336.85 feet to a point for a corner;  
THENCE South 9°34'00" West, along a line, a distance of 20.18 feet to a point for a corner;  
THENCE South 54°33'45" West, along a line, a distance of 54.32 feet to a point for a corner;  
THENCE North 80°26'06" West, along a line, a distance of 20.64 feet to a point for a corner;  
THENCE South 54°47'04" West, along a line, a distance of 326.20 feet to a point for a corner;  
THENCE South 54°47'05" West, along a line, a distance of 400.02 feet to a point for a corner;  
THENCE South 34°47'48" East, along a line, a distance of 21.59 feet to a point for a corner;  
THENCE South 54°49'14" West, along a line, a distance of 54.25 feet to a point for a corner;  
THENCE South 74°17'58" West, along a line, a distance of 64.52 feet to a point for a corner;  
THENCE South 54°47'04" West, along a line, a distance of 36.12 feet to a point for a corner;  
THENCE South 54°47'05" West, along a line, a distance of 169.60 feet to a point for a corner;  
THENCE South 54°47'05" West, along a line, a distance of 251.31 feet to a point for a corner;  
THENCE South 55°36'00" West, along a line, a distance of 187.55 feet to a point for a corner;  
THENCE South 54°32'31" West, along a line, a distance of 357.90 feet to a point for a corner;  
THENCE South 54°32'47" West, along a line, a distance of 500.29 feet to a point for a corner;  
THENCE South 53°54'24" West, along a line, a distance of 335.98 feet to a point for a corner;  
THENCE South 53°54'06" West, along a line, a distance of 218.44 feet to a point for a corner;  
THENCE South 56°55'51" West, along a line, a distance of 46.94 feet to a point for a corner;  
THENCE South 53°07'29" West, along a line, a distance of 342.61 feet to a point for a corner;  
THENCE South 57°39'36" West, along a line, a distance of 348.70 feet to a point for a corner;  
THENCE South 54°42'37" West, along a line, a distance of 283.80 feet to a point for a corner;  
THENCE South 54°26'59" West, along a line, a distance of 229.28 feet to a point for a corner;  
THENCE South 54°10'44" West, along a line, a distance of 281.87 feet to a point for a corner;  
THENCE South 54°14'11" West, along a line, a distance of 467.33 feet to a point for a corner;  
THENCE South 54°42'23" West, along a line, a distance of 344.19 feet to a point for a corner;  
THENCE South 41°37'08" West, along a line, a distance of 129.07 feet to a point for a corner;  
THENCE South 53°50'49" West, along a line, a distance of 189.16 feet to a point for a corner;  
THENCE South 53°35'43" West, along a line, a distance of 632.68 feet to a point for a corner;  
THENCE North 39°03'00" West, along a line, a distance of 340.40 feet to a point for a corner;  
THENCE North 53°44'46" East, along a line, a distance of 86.38 feet to a point for a corner;  
THENCE North 33°35'12" West, along a line, a distance of 228.68 feet to a point for a corner;  
THENCE North 88°51'21" East, along a line, a distance of 128.22 feet; to the point of beginning  
and containing 3,864,515.61 square feet, or 88.72 acres of land.

**City of Caddo Mills, State of Texas, County of Hunt**  
**City Limits Annexation**  
**Of**  
**Interstate 30 Right of Way**  
**From**  
**FM 36 to FM 1903**

BEGINNING at the intersection of the existing city limits boundary and the south corner of a tract of land in Hunt County, Texas, out of the Bustilla Clemente survey, A0049, Tract 25-1, and being a 3.96 acre tract of land described in a deed from Edith Nelson to Bonnie Nelson dated May 5, 1972 and recorded in Volume 713, Page 34 of the Deed Records of Hunt County Texas and being more fully described as follows:

THENCE North 51°35'06" East, along a line, a distance of 175.14 feet to a point for a corner;  
THENCE North 51°50'06" East, along a line, a distance of 551.64 feet to a point for a corner;  
THENCE North 57°44'02" East, along a line, a distance of 253.23 feet to a point for a corner;  
THENCE North 56°24'48" East, along a line, a distance of 247.78 feet to a point for a corner;  
THENCE North 47°37'20" East, along a line, a distance of 127.08 feet to a point for a corner;  
THENCE North 46°51'41" East, along a line, a distance of 172.32 feet to a point for a corner;  
THENCE North 45°59'07" East, along a line, a distance of 172.32 feet to a point for a corner;  
THENCE North 45°06'34" East, along a line, a distance of 172.32 feet to a point for a corner;  
THENCE North 44°14'01" East, along a line, a distance of 172.32 feet to a point for a corner;  
THENCE North 43°21'28" East, along a line, a distance of 172.32 feet to a point for a corner;  
THENCE North 42°28'55" East, along a line, a distance of 172.32 feet to a point for a corner;  
THENCE North 41°36'21" East, along a line, a distance of 172.32 feet to a point for a corner;  
THENCE North 40°19'50" East, along a line, a distance of 756.47 feet to a point for a corner;  
THENCE North 40°42'42" East, along a line, a distance of 248.58 feet to a point for a corner;  
THENCE North 40°42'42" East, along a line, a distance of 124.46 feet to a point for a corner;  
THENCE North 40°42'42" East, along a line, a distance of 98.50 feet to a point for a corner;  
THENCE North 40°42'42" East, along a line, a distance of 91.52 feet to a point for a corner;  
THENCE North 41°29'12" East, along a line, a distance of 206.33 feet to a point for a corner;  
THENCE North 28°24'15" West, along a line, a distance of 21.50 feet to a point for a corner;  
THENCE North 40°54'37" East, along a line, a distance of 75.52 feet to a point for a corner;  
THENCE South 70°36'47" East, along a line, a distance of 21.22 feet to a point for a corner;  
THENCE North 39°48'09" East, along a line, a distance of 197.33 feet to a point for a corner;  
THENCE North 40°37'42" East, along a line, a distance of 192.33 feet to a point for a corner;  
THENCE North 32°22'45" East, along a line, a distance of 219.72 feet to a point for a corner;  
THENCE North 41°54'51" East, along a line, a distance of 172.97 feet to a point for a corner;  
THENCE North 48°42'22" East, along a line, a distance of 225.43 feet to a point for a corner;  
THENCE North 40°47'33" East, along a line, a distance of 302.60 feet to a point for a corner;  
THENCE North 40°47'29" East, along a line, a distance of 90.00 feet to a point for a corner;  
THENCE North 41°11'02" East, along a line, a distance of 176.79 feet to a point for a corner;  
THENCE North 39°57'35" East, along a line, a distance of 459.06 feet to a point for a corner;  
THENCE North 40°56'27" East, along a line, a distance of 529.57 feet to a point for a corner;  
THENCE North 41°53'18" East, along a line, a distance of 139.85 feet to a point for a corner;  
THENCE North 40°27'18" East, along a line, a distance of 212.70 feet to a point for a corner;  
THENCE North 41°02'21" East, along a line, a distance of 176.56 feet to a point for a corner;  
THENCE North 39°53'03" East, along a line, a distance of 176.18 feet to a point for a corner;  
THENCE North 37°38'03" East, along a line, a distance of 170.53 feet to a point for a corner;  
THENCE North 36°46'44" East, along a line, a distance of 174.54 feet to a point for a corner;  
THENCE North 37°46'34" East, along a line, a distance of 109.47 feet to a point for a corner;  
THENCE North 35°24'15" East, along a line, a distance of 143.63 feet to a point for a corner;  
THENCE North 33°31'22" East, along a line, a distance of 150.45 feet to a point for a corner;  
THENCE North 34°59'18" East, along a line, a distance of 110.56 feet to a point for a corner;  
THENCE North 34°25'37" East, along a line, a distance of 301.79 feet to a point for a corner;

THENCE North 33°37'43" East, along a line, a distance of 404.61 feet to a point for a corner;  
THENCE North 33°27'57" East, along a line, a distance of 1,318.78 feet to a point for a corner;  
THENCE North 25°40'37" East, along a line, a distance of 322.78 feet to a point for a corner;  
THENCE North 33°42'15" East, along a line, a distance of 235.98 feet to a point for a corner;  
THENCE South 54°06'10" East, along a line, a distance of 28.64 feet to a point for a corner;  
THENCE North 34°42'47" East, along a line, a distance of 438.24 feet to a point for a corner;  
THENCE North 33°31'57" East, along a line, a distance of 310.52 feet to a point for a corner;  
THENCE South 60°22'39" East, along a line, a distance of 346.76 feet to a point for a corner;  
THENCE South 33°23'58" West, along a line, a distance of 334.16 feet to a point for a corner;  
THENCE South 33°30'09" West, along a line, a distance of 57.45 feet to a point for a corner;  
THENCE South 33°32'59" West, along a line, a distance of 640.18 feet to a point for a corner;  
THENCE South 42°37'59" West, along a line, a distance of 253.20 feet to a point for a corner;  
THENCE South 33°33'00" West, along a line, a distance of 309.22 feet to a point for a corner;  
THENCE South 33°17'27" West, along a line, a distance of 738.21 feet to a point for a corner;  
THENCE South 33°17'09" West, along a line, a distance of 202.20 feet to a point for a corner;  
THENCE South 32°32'36" West, along a line, a distance of 279.07 feet to a point for a corner;  
THENCE South 36°04'34" West, along a line, a distance of 80.14 feet to a point for a corner;  
THENCE South 33°52'00" West, along a line, a distance of 292.54 feet to a point for a corner;  
THENCE South 33°32'10" West, along a line, a distance of 75.67 feet to a point for a corner;  
THENCE South 35°31'02" West, along a line, a distance of 219.13 feet to a point for a corner;  
THENCE South 35°21'56" West, along a line, a distance of 342.11 feet to a point for a corner;  
THENCE South 37°54'05" West, along a line, a distance of 126.71 feet to a point for a corner;  
THENCE South 34°49'41" West, along a line, a distance of 61.21 feet to a point for a corner;  
THENCE South 38°27'20" West, along a line, a distance of 158.95 feet to a point for a corner;  
THENCE South 39°16'50" West, along a line, a distance of 174.36 feet to a point for a corner;  
THENCE South 40°04'25" West, along a line, a distance of 145.99 feet to a point for a corner;  
THENCE South 41°57'03" West, along a line, a distance of 363.14 feet to a point for a corner;  
THENCE South 40°38'15" West, along a line, a distance of 349.88 feet to a point for a corner;  
THENCE South 34°55'27" West, along a line, a distance of 188.30 feet to a point for a corner;  
THENCE South 41°06'34" West, along a line, a distance of 708.01 feet to a point for a corner;  
THENCE South 41°06'32" West, along a line, a distance of 77.49 feet to a point for a corner;  
THENCE South 41°01'15" West, along a line, a distance of 205.09 feet to a point for a corner;  
THENCE South 40°49'53" West, along a line, a distance of 128.11 feet to a point for a corner;  
THENCE South 40°49'53" West, along a line, a distance of 1,127.36 feet to a point for a corner;  
THENCE South 41°11'02" West, along a line, a distance of 500.00 feet to a point for a corner;  
THENCE South 40°05'33" West, along a line, a distance of 147.35 feet to a point for a corner;  
THENCE South 41°59'14" West, along a line, a distance of 245.23 feet to a point for a corner;  
THENCE South 40°04'20" West, along a line, a distance of 223.12 feet to a point for a corner;  
THENCE South 40°45'36" West, along a line, a distance of 275.42 feet to a point for a corner;  
THENCE South 41°18'25" West, along a line, a distance of 275.42 feet to a point for a corner;  
THENCE South 41°18'56" West, along a line, a distance of 161.49 feet to a point for a corner;  
THENCE South 43°29'25" West, along a line, a distance of 357.69 feet to a point for a corner;  
THENCE South 45°45'24" West, along a line, a distance of 188.55 feet to a point for a corner;  
THENCE South 45°45'33" West, along a line, a distance of 181.86 feet to a point for a corner;  
THENCE South 44°50'29" West, along a line, a distance of 322.19 feet to a point for a corner;  
THENCE South 40°24'35" West, along a line, a distance of 307.16 feet to a point for a corner;  
THENCE South 51°48'38" West, along a line, a distance of 49.52 feet to a point for a corner;  
THENCE South 51°44'03" West, along a line, a distance of 447.22 feet to a point for a corner;  
THENCE South 53°26'17" West, along a line, a distance of 458.96 feet to a point for a corner;  
THENCE North 35°30'32" West, along a line, a distance of 402.52 feet; to the point of beginning  
and containing 3,720,764.42 square feet, or 85.42 acres of land.

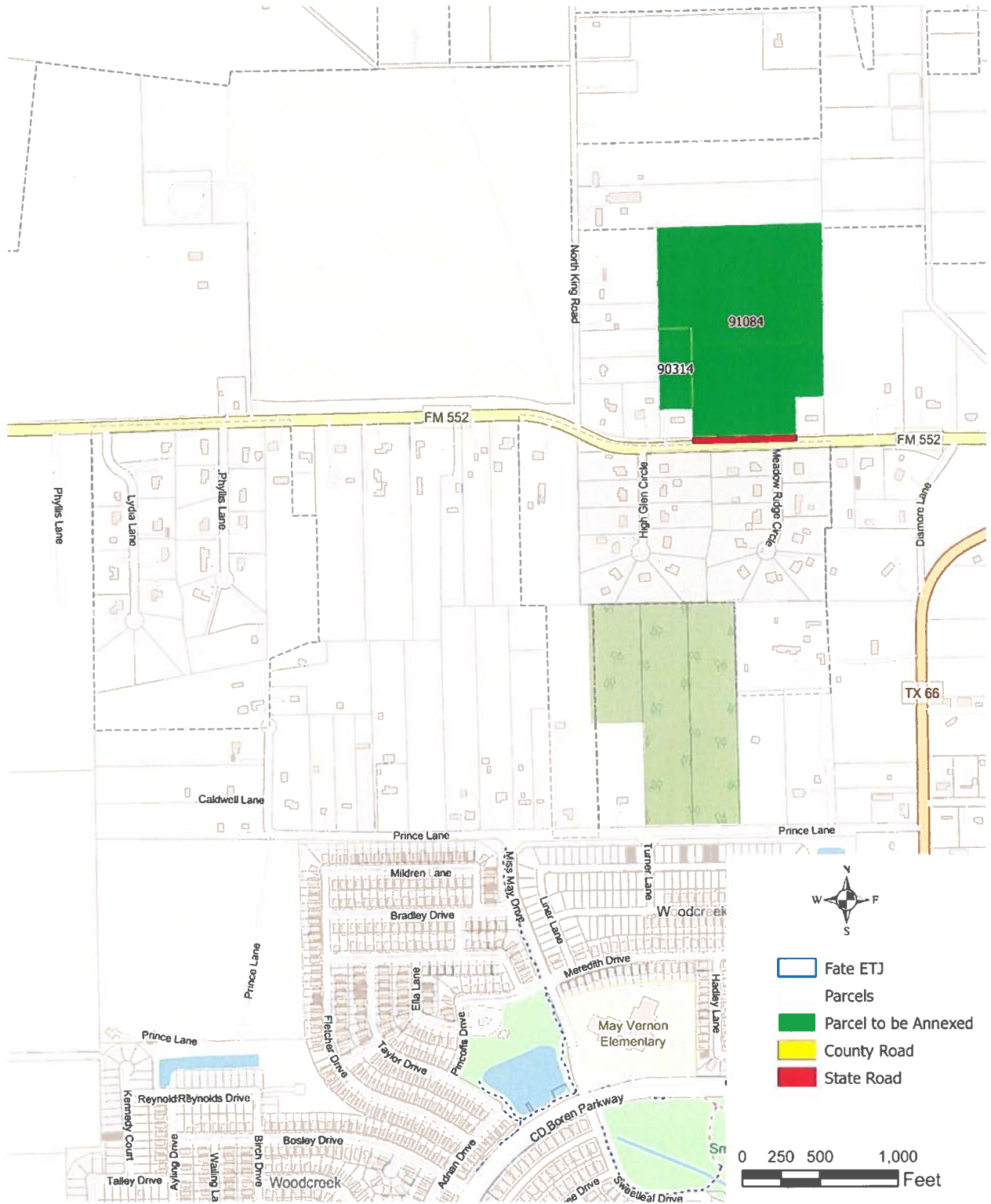
**City of Caddo Mills, State of Texas, County of Hunt  
City Limits Annexation  
Of  
Interstate 30 Right of Way  
From  
FM 1903 to CR 2172 (Caddo Mills ETJ boundary)**

BEGINNING at the intersection of the existing city limits boundary and the southeast corner of a tract of land in Hunt County, Texas, out of the Morris Mary survey, A0649, Tract M11-1, and being a 1.673 acre tract of land described in a deed from Rex & Roy Ray Nelson to Rex Nelson & Nelson Living Trust dated December 18, 2025 and recorded in Instrument 2025-23520 of the Deed Records of Hunt County Texas and being more fully described as follows:

THENCE North 58°11'35" East, along a line, a distance of 33.42 feet to a point for a corner;  
THENCE North 33°47'07" East, along a line, a distance of 29.99 feet to a point for a corner;  
THENCE North 33°45'36" East, along a line, a distance of 171.71 feet to a point for a corner;  
THENCE North 35°39'11" East, along a line, a distance of 56.12 feet to a point for a corner;  
THENCE North 22°49'15" East, along a line, a distance of 50.60 feet to a point for a corner;  
THENCE North 32°24'39" East, along a line, a distance of 242.89 feet to a point for a corner;  
THENCE North 32°24'40" East, along a line, a distance of 304.46 feet to a point for a corner;  
THENCE North 42°58'03" East, along a line, a distance of 253.18 feet to a point for a corner;  
THENCE North 33°42'12" East, along a line, a distance of 271.82 feet to a point for a corner;  
THENCE North 33°42'12" East, along a line, a distance of 212.78 feet to a point for a corner;  
THENCE North 33°48'04" East, along a line, a distance of 369.23 feet to a point for a corner;  
THENCE North 33°48'04" East, along a line, a distance of 190.96 feet to a point for a corner;  
THENCE North 33°52'01" East, along a line, a distance of 180.08 feet to a point for a corner;  
THENCE North 34°53'53" East, along a line, a distance of 123.59 feet to a point for a corner;  
THENCE North 36°07'21" East, along a line, a distance of 123.59 feet to a point for a corner;  
THENCE North 37°22'18" East, along a line, a distance of 128.56 feet to a point for a corner;  
THENCE North 38°00'14" East, along a line, a distance of 135.01 feet to a point for a corner;  
THENCE North 39°15'43" East, along a line, a distance of 124.75 feet to a point for a corner;  
THENCE North 40°28'11" East, along a line, a distance of 124.75 feet to a point for a corner;  
THENCE North 41°08'55" East, along a line, a distance of 15.49 feet to a point for a corner;  
THENCE North 42°58'03" East, along a line, a distance of 144.67 feet to a point for a corner;  
THENCE North 44°15'09" East, along a line, a distance of 125.94 feet to a point for a corner;  
THENCE North 45°26'53" East, along a line, a distance of 73.54 feet to a point for a corner;  
THENCE North 45°26'56" East, along a line, a distance of 52.40 feet to a point for a corner;  
THENCE North 46°38'40" East, along a line, a distance of 56.53 feet to a point for a corner;  
THENCE North 46°38'41" East, along a line, a distance of 69.41 feet to a point for a corner;  
THENCE North 48°32'10" East, along a line, a distance of 140.92 feet to a point for a corner;  
THENCE North 50°37'30" East, along a line, a distance of 32.27 feet to a point for a corner;  
THENCE South 39°24'20" East, along a line, a distance of 308.86 feet to a point for a corner;  
THENCE South 47°17'56" West, along a line, a distance of 177.58 feet to a point for a corner;  
THENCE South 47°46'36" West, along a line, a distance of 178.67 feet to a point for a corner;  
THENCE South 44°03'33" West, along a line, a distance of 119.78 feet to a point for a corner;  
THENCE South 42°49'39" West, along a line, a distance of 121.69 feet to a point for a corner;  
THENCE South 41°35'11" West, along a line, a distance of 121.69 feet to a point for a corner;  
THENCE South 40°20'41" West, along a line, a distance of 121.69 feet to a point for a corner;  
THENCE South 39°06'12" West, along a line, a distance of 121.69 feet to a point for a corner;  
THENCE South 37°51'44" West, along a line, a distance of 121.69 feet to a point for a corner;  
THENCE South 36°37'14" West, along a line, a distance of 121.69 feet to a point for a corner;  
THENCE South 35°22'46" West, along a line, a distance of 121.69 feet to a point for a corner;  
THENCE South 34°08'57" West, along a line, a distance of 119.51 feet to a point for a corner;  
THENCE South 32°42'35" West, along a line, a distance of 211.44 feet to a point for a corner;  
THENCE South 33°25'47" West, along a line, a distance of 280.08 feet to a point for a corner;

THENCE South 33°32'22" West, along a line, a distance of 280.46 feet to a point for a corner;  
THENCE South 34°03'08" West, along a line, a distance of 386.64 feet to a point for a corner;  
THENCE South 25°13'14" West, along a line, a distance of 240.58 feet to a point for a corner;  
THENCE South 34°02'40" West, along a line, a distance of 202.98 feet to a point for a corner;  
THENCE South 35°21'44" West, along a line, a distance of 89.82 feet to a point for a corner;  
THENCE South 34°02'42" West, along a line, a distance of 576.56 feet to a point for a corner;  
THENCE North 60°22'57" West, along a line, a distance of 377.33 feet; to the point of beginning  
and containing 1,239,495.84 square feet, or 28.45 acres of land.

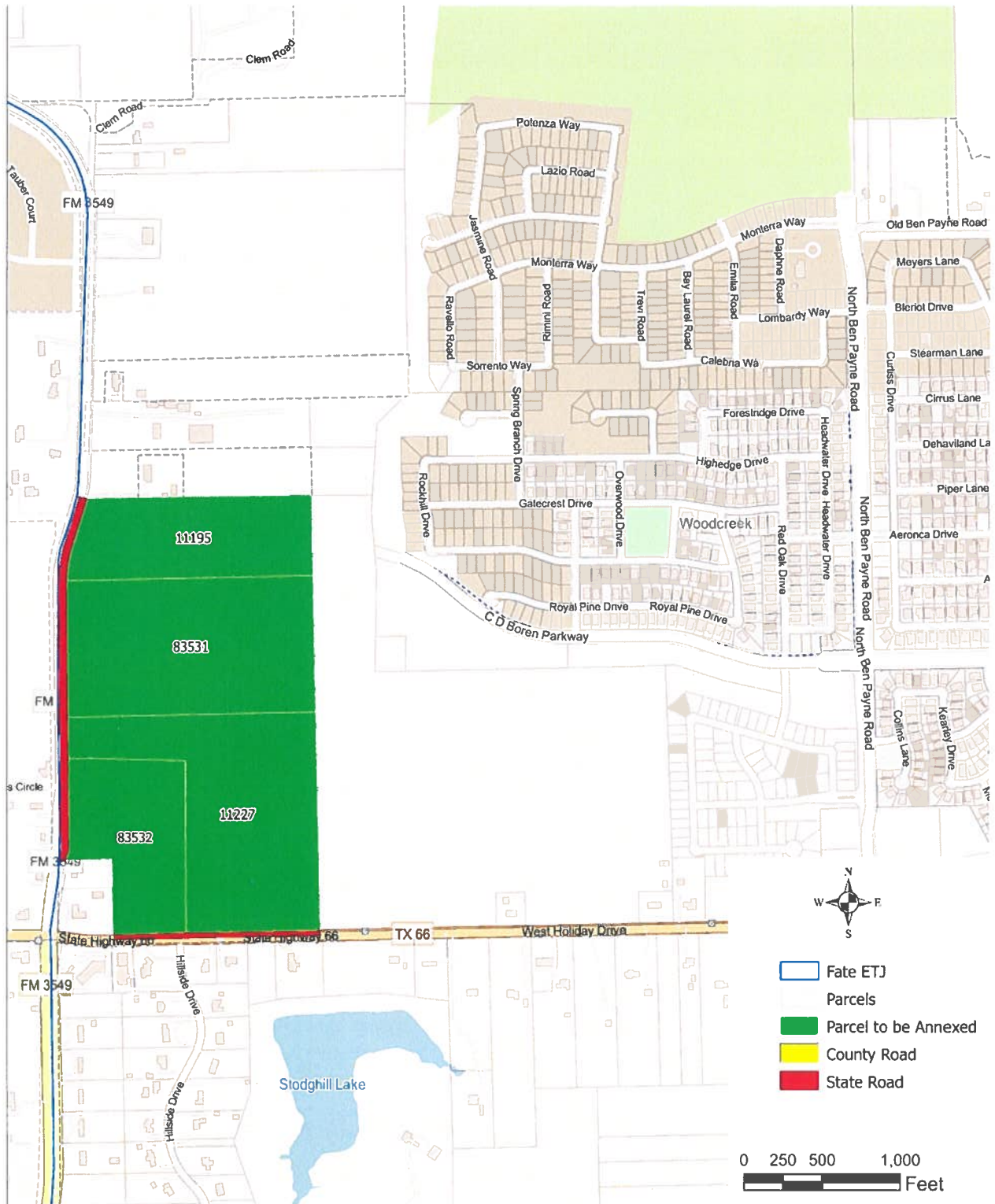
# Parcels and Roads to be Annexed



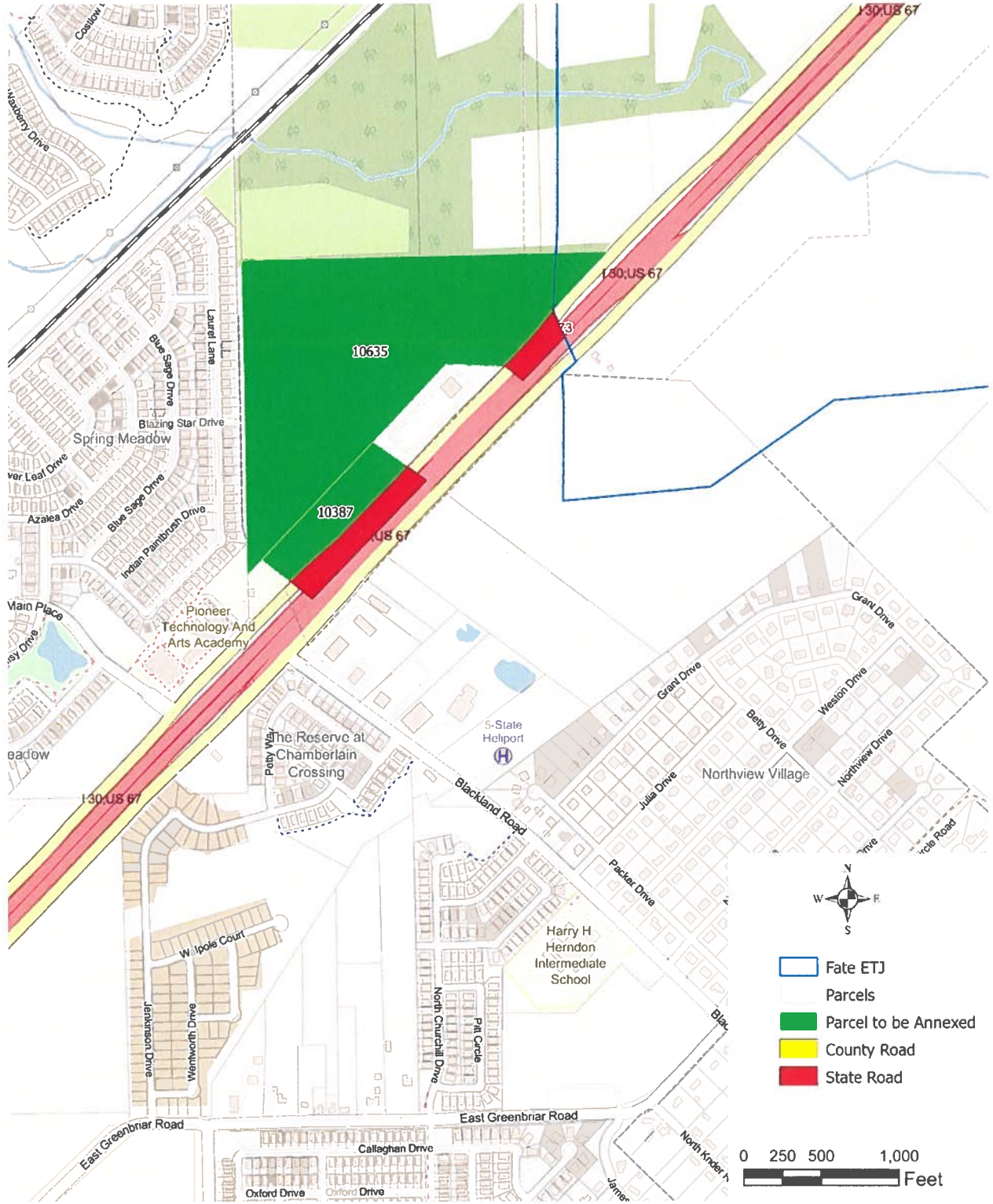
# Parcels and Roads to be Annexed



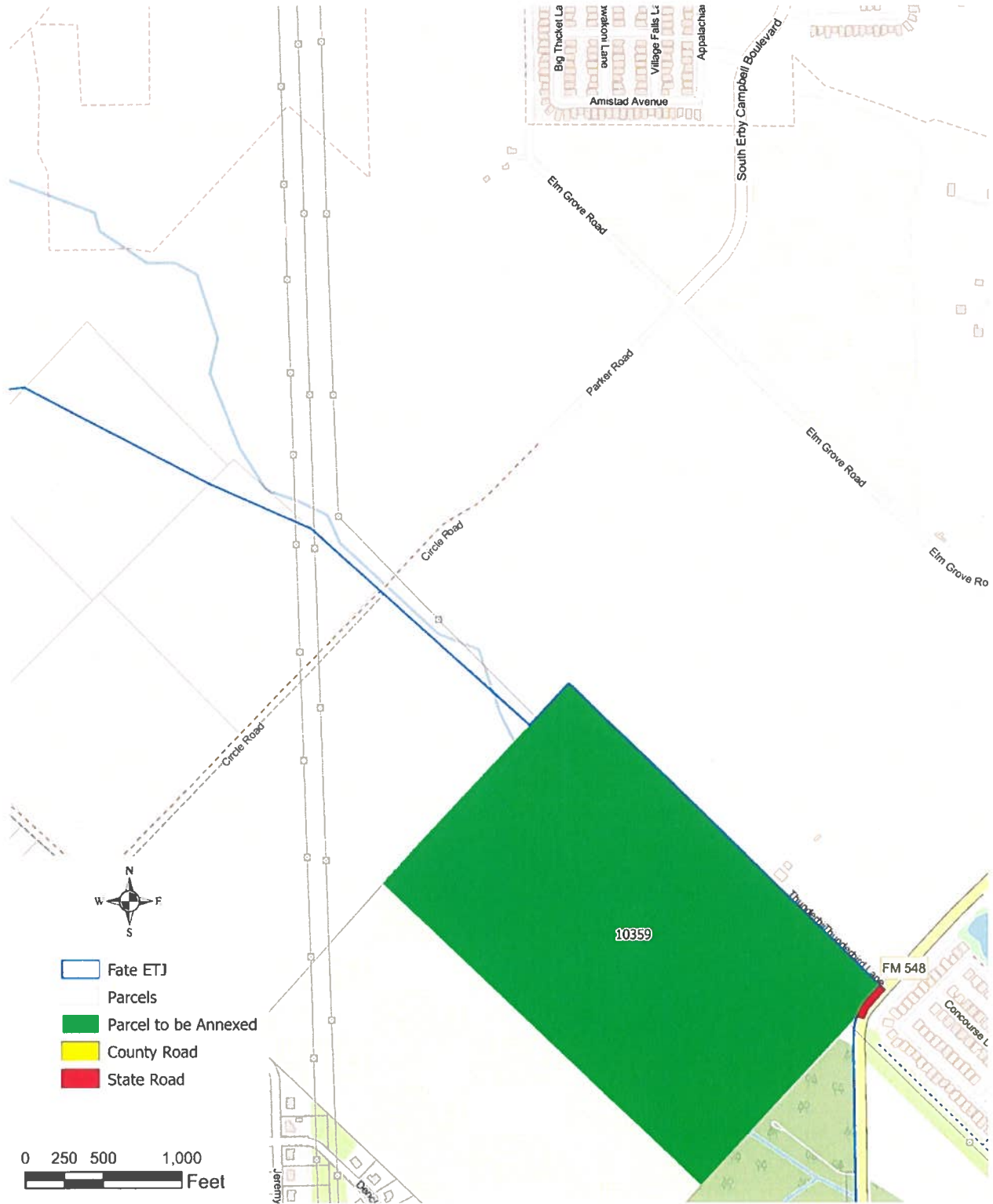
# Parcels and Roads to be Annexed



# Parcels and Roads to be Annexed



# Parcels and Roads to be Annexed



# Parcels and Roads to be Annexed

